

Intersectoral Community Action for Health in Counties Manukau

The intersectoral work undertaken by Counties Manukau DHB is funded by the Ministry of Health under the Intersectoral Community Action for Health Initiative. This initiative is funded from the Reducing Inequalities Contingency Fund and has the specific objective of “reducing health inequalities” in Counties Manukau.

The ICAH initiative funds two complimentary components of the intersectoral work undertaken by CMDHB, Intersectoral Community Projects and the Youth Interagency Project an intersectoral initiative focusing on the needs of young people in Counties Manukau.

The following process was adopted in the development and selection of projects to be undertaken:

- identification of needs through consultation with other sectors/organisations
- the preparation of a needs assessment involving input from other sectors
- development of priorities based on consultation with sectors and young people
- three-monthly meetings of the Steering Group
- monthly working parties on specific initiatives

The selection of key intersectoral initiatives is undertaken in conjunction with the relevant sectors, who actively participate in the Steering Group. It is only with the explicit support of sectors can a project proceed from scoping to implementation. Sector commitment is identified in the scoping phase. Information and best practice evidence is collected during the scoping phase and is essential to enable intersectoral decision making, identification of joint outcomes and the allocation of appropriate resourcing.

An intersectoral steering group has been established involving a wide range of sectors, who attend a regular three-monthly forum/ or Steering Group and have established a series of working parties to undertake specific agreed projects.

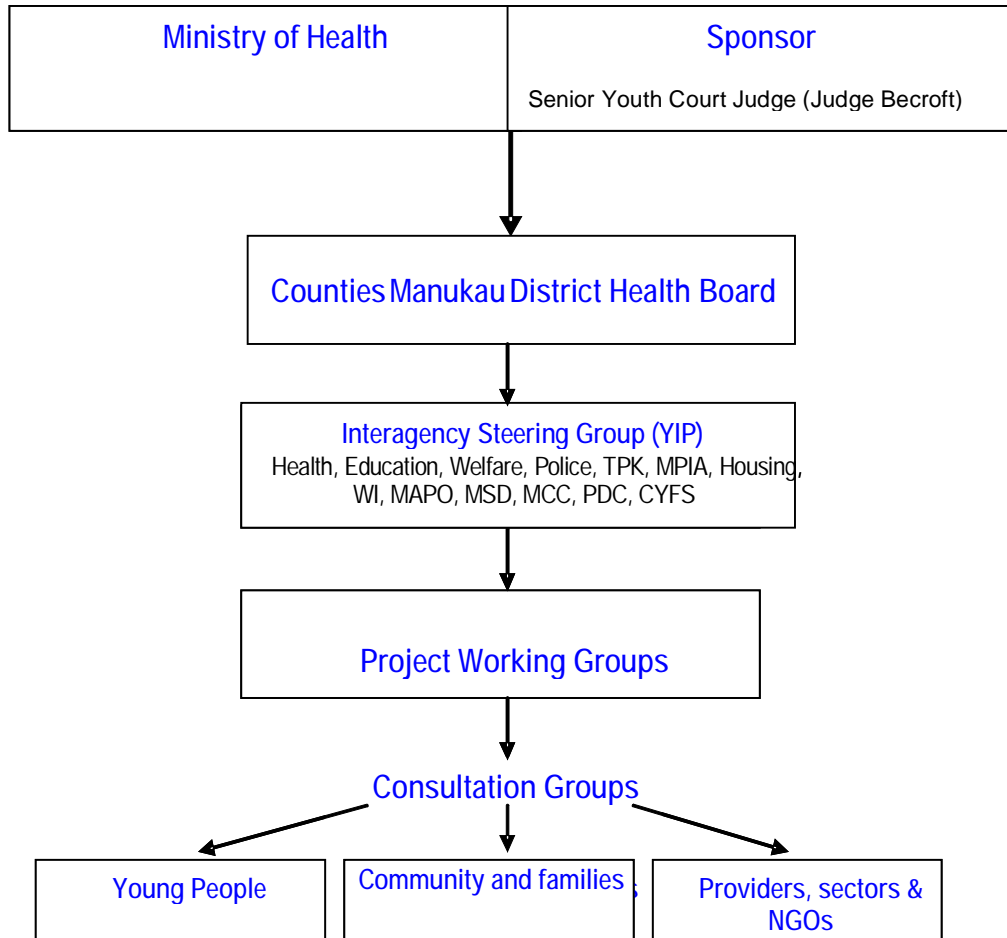
The purpose of this meeting is to share information, facilitate a close effective working relationship and strategic interface.

The sectors participating are as follows:

- Housing New Zealand Corporation
- Ministry of Social Development
- Work and Income (Ministry of Social Development)
- Ministry of Education
- Police
- Child Youth and Family Service
- Ministry of Pacific Island Affairs
- Ministry of Maori Development (Te Puni Kokiri)
- Manukau City Council
- Papakura District Council
- Strengthening Families
- MAPO

The strategic objective of the Steering Group is to implement joint projects and to establish effective working relationship through the transfer of information, shared training opportunities and regular networking meetings between agencies.

The structure of the Intersectoral Steering Group is as follows:



Terms of reference for the Interagency Steering Group:

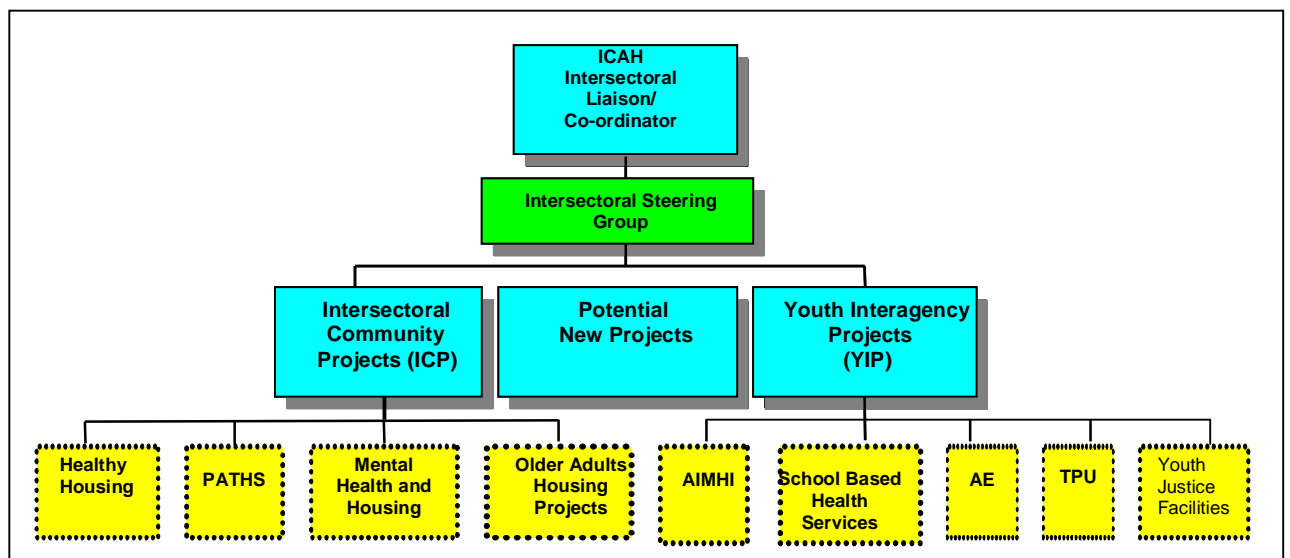
- The objective of the Intersectoral Community Action for Health is to develop a collaborative strategic planning process that will create an effective working partnership resulting in improved synergies between sectors. The focus of all projects is reducing inequities for high need populations. It is envisaged that this will result in improving the health, education and wellbeing outcomes for people in Counties Manukau by ensuring that new initiatives are coordinated
- There are two strategic priorities- Intersectoral Community Project (ICP) and Youth Intersectoral Project (YIP). ICP is currently focusing on three main projects- Healthy Housing, PATHS, Housing and Mental health and Older Adults Housing Project
- YIP is currently focusing on AIMHI, Developing Resilience (Alternative Education and Residences) and School Health.

Terms of reference for CMDHB project team:

- Project management
- Leadership for defined projects
- Participation and support for other projects with an emphasis on partnerships
- Background statistical collection and analysis
- Outcome focused.

Funding provided by the ICAH contract has enabled CMDHB to undertake a wide range of intersectoral projects. For a project/initiative to be considered an intersectoral initiative it requires joint resourcing and funding from more than one sector. CMDHB provides the Project Management and coordination for all the initiatives included in the Annual Plan, acknowledging that in some instances initiatives are jointly project managed with another sector.

Intersectoral Community Action for Health in Counties Manukau



Intersectoral co-ordination is an integral component of Counties Manukau ICAH initiative. Many of the initiatives included in this component of ICAH are led by other sectors/agencies and CMDHB is only a participant therefore reporting mechanisms are via the lead agency/sector.

Intersectoral Projects – Strategic Directions

1. Strategic Direction 1: Intersectoral Coordination in Counties Manukau through intersectoral collaboration
 - To improve the health, education and social outcomes for the population of Counties Manukau and reduce inequalities through intersectoral collaboration

Intersectoral Community Projects

Output 1.1: Housing and Health: Continuation of the Healthy Housing Programme

- The continuation of the Healthy Housing Programme in order to reduce household crowding and improve the health status of families residing in Housing New Zealand Corporation homes in Counties Manukau.

Output 1.2: PATHS (Providing Access to Health Solutions) Programme

- Paths is a joint initiative between CMDHB, Work and Income and the Ministry of Social Development (MSD) to assist people in receipt of either the sickness or invalids benefit receive appropriate health care so that they may return to work. The programme is voluntary and aims to identify physical/disability health conditions including mental health that may limit a return to work.

Output 1.3: Mental Health and Housing Solutions (3 year pilot)

- To improve access to appropriate health and housing services for mental health consumers in Counties Manukau.

Output 1.4: Older Adults Housing Project

- To improve access to appropriate social housing services for older adults resident in Counties Manukau.

Youth Interagency Projects

Output 1.5: Youth Interagency Project: School Based Health Services. Improving health and social outcomes for young people In Counties Manukau Secondary Schools. (Co-funded by CMDHB).

- This project will review and implement (when able) secondary school based health services in Counties Manukau with the aim reducing inequalities , improving infrastructure and integrating service delivery across sectors.

Output 1.6: Youth Interagency Project: AIMHI.

To improve the health, education and social outcomes for young people in the AIMHI schools.

- Continuation of the AIMHI Healthy Community Schools Project.

Output 1.7: Youth Interagency Project: TPU- Teen Parent Units

Improving health and social outcomes for young people removed from mainstream (Resilient Young People)(Implemented in conjunction with CMDHB).

- This project will scope, plan and implement appropriate health and social services that are required for specific groups of young people who are located in a variety of non-mainstream facilities e.g. Teen Parent Units.

Output 1.8: Youth Interagency Project: Alternative Education (AE)

Improving health and social outcomes for young people removed from mainstream (Resilient Young People)(Implemented in conjunction with CMDHB).

- This project will scope, plan and implement appropriate health and social services that are required for specific groups of young people who are within a Alternative Education service.

Output 1.9: Youth Interagency Project: Youth Justice Facilities

Improving health and social outcomes for young people removed from mainstream (Resilient Young People)(Implemented in conjunction with CMDHB).

- This project will scope, plan and implement appropriate health and social services that are required for specific groups of young people who are located in a variety of non-mainstream facilities e.g. Youth Justice Facilities.