

Counties Manukau District Health Board

Primary Health Care Nursing Reference Group

1. Purpose

- 1.1 To establish and develop a specific forum for nurses engaged in the delivery of primary health care in CMDHB which supports.
- the implementation of the Primary Health Care Strategy and Whakatohutia te Oranga Tangata – A framework for activating primary health care nursing in New Zealand
 - the CMDHB Strategic Direction and District Area Plans
 - a leadership and governance model for nurses in the sector with supporting infrastructure
 - ensure a consistent and coordinated approach
 - foster opportunities of an integrated approach focused on improved health outcomes
 - ensure effective and ongoing communication and information sharing.

2. Objectives

- 2.1 To support and continue to develop Primary Health Care Nursing Leadership.
- Support and continue to develop Primary Health Care Nurses and Nurse Practitioners ongoing education, scopes of practice, quality systems and nursing practice.
 - Actively encourage and support the expanded role for Nurse Practitioners.
 - Work with tertiary education providers to develop educational opportunities for the primary health care sector.
 - Develop a skilled, knowledgeable and proactive innovative primary health care workforce.
 - Foster relationships with all stakeholders in the primary, secondary and tertiary health care and the tertiary education providers.
 - Encourage an environment in which primary health care nursing may flourish.

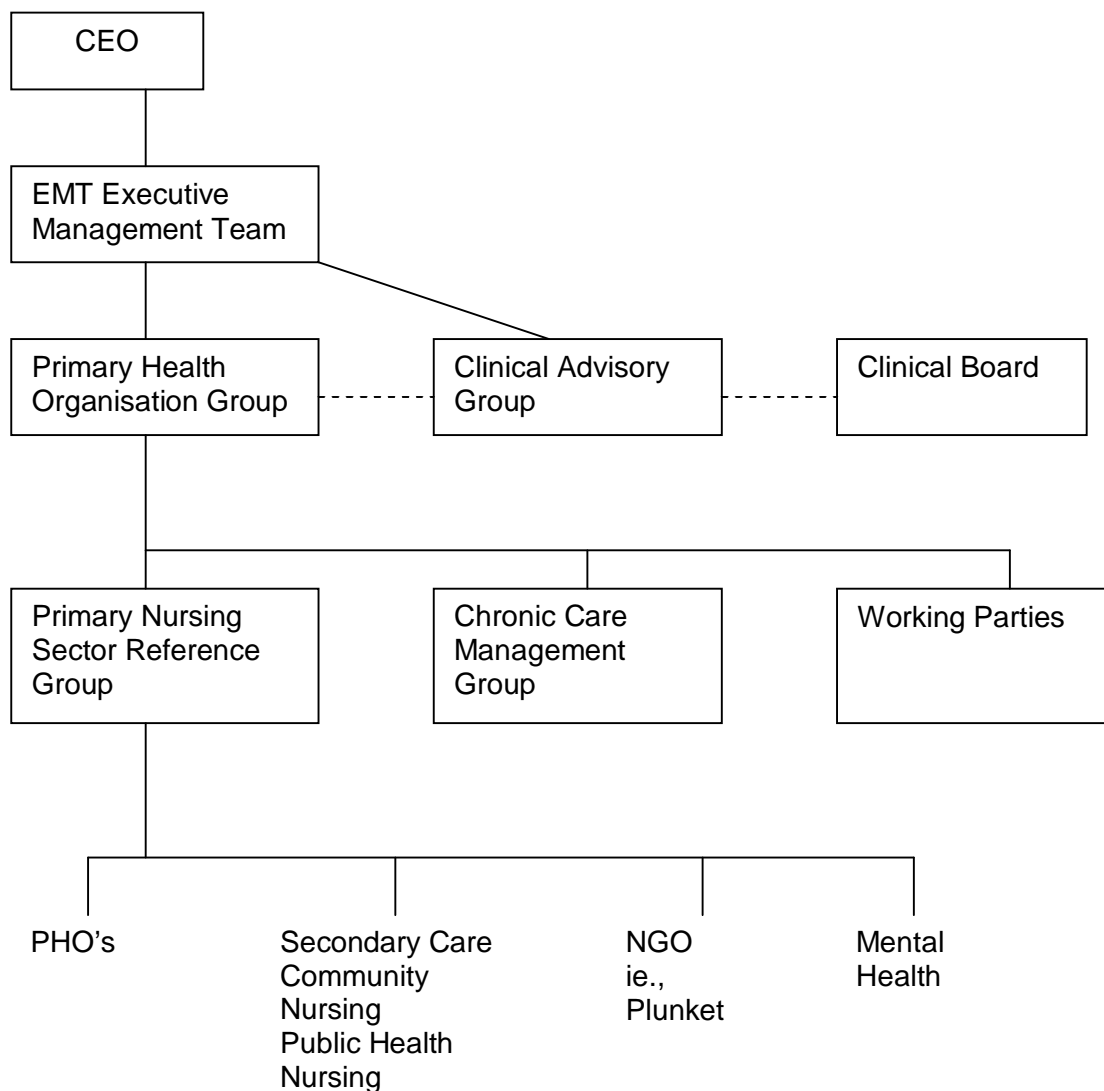
3. Guiding Principles

- Operating within the policies and strategies of CMDHB to ensure a shared strategic direction and shared priorities across the primary health care sector and CMDHB.
- A collaborative approach that uses consensus decision-making to promote group cohesiveness, accountability and positive relationships.

- Open and transparent processes.
- Clinical governance lying with providers.
- Alignment of clinical and financial accountabilities.
- A systems approach recognising the impact of other sectors on nursing and health outcomes.
- Openly acknowledging areas in which the parties have different perspectives and imperatives.
- Collaboration between providers will be essential to deliver high quality effective outcomes.
- Develop under the principles of the “Investing in Health – A framework for activating primary health care nursing in New Zealand.

4.

Structure



The Primary Nursing Sector Reference Group will be a key group reporting into the Primary Health Organisations Group (GPHO). The Primary Health Organisations Group will provide the overarching leadership for primary care and integrated advice to the DHB.

5.

Linkages

Group / Committee	Linkage
1. Clinical Board	Primary Nursing Reference Group member on Clinical Board.
2. Steering Groups - New Graduate - Clinical Career Pathway	Primary Nursing Group member on Steering Committee.
3. Nursing Development	Primary Nursing Group member on Steering Group.

6.

Membership

- Representative nurses from PHO's, Public Health, District Nursing, Home Care Services.
- Representative from Clinical Nurse Director team ?Intermediary CND.
- Representative from NGO, ACC, Plunket.
- Representative from WDHB / A+DHB.
- Primary Health Care Advisor (Allan Moffitt).
- Representative from The University of Auckland and Manukau Institute of Technology.
- Professional Advisor for NZNO responsible for Primary Health Care Nursing.
- Mental Health Community Care Nursing representative.

From time to time in addition to the identified primary health care nursing members, expertise may be included to support the development and implementation of a project.

7.

Meetings

- Meetings will be held monthly.

Meeting agenda, minutes and papers will be sent out one week prior to meeting.

It is anticipated that nursing representatives are able to speak and make decision on behalf of their respective organisations.

The meeting will be chaired by the Director of Nursing or Primary Health Care Nurse Leader.

Decision making will be made by consensus of the group.

Monthly reports will be forwarded to the GPHO so that they can be included in agenda papers or members.

8. **Quorum**

The quorum will be at least five primary health care representatives and one CMDHB representative.

9. **Reporting and Accountability**

Members of the Primary Health Care Nursing Reference Group are accountable to their respective employers. The Group reports to the GPHO.

10. **Payment**

PHO and DHB members shall be funded by their respective organisations. For the meetings members will be reimbursed according to CMDHB's 'Remuneration Policy'. Claims to be forwarded and processed by the Director of Nursing / or Nursing Leader Primary Health Care.

11. **Confidentiality**

Agenda papers and minutes will be confidential only if specifically rated as such by the DHB or Author of the paper or as agreed by the Primary Health Care Nursing Reference Group, otherwise they will be treated as in the public domain. CMDHB Media Policy will apply to the Primary Health Care Nursing Representative Group.

Drafted: August 2003
Reviewed: August 2007
By: Director of Nursing, CMDHB